



# Tour of Campus Party Locations



Come on! Let's go see all of the great party venues on campus! I always have a great time & know you will, too!

# Tier I Party Spaces:

Alumnae Garden (Rain plan: Alumnae House)

McCain, Room 211

McCain, Elmore Reading Room

## Tier I Classes:

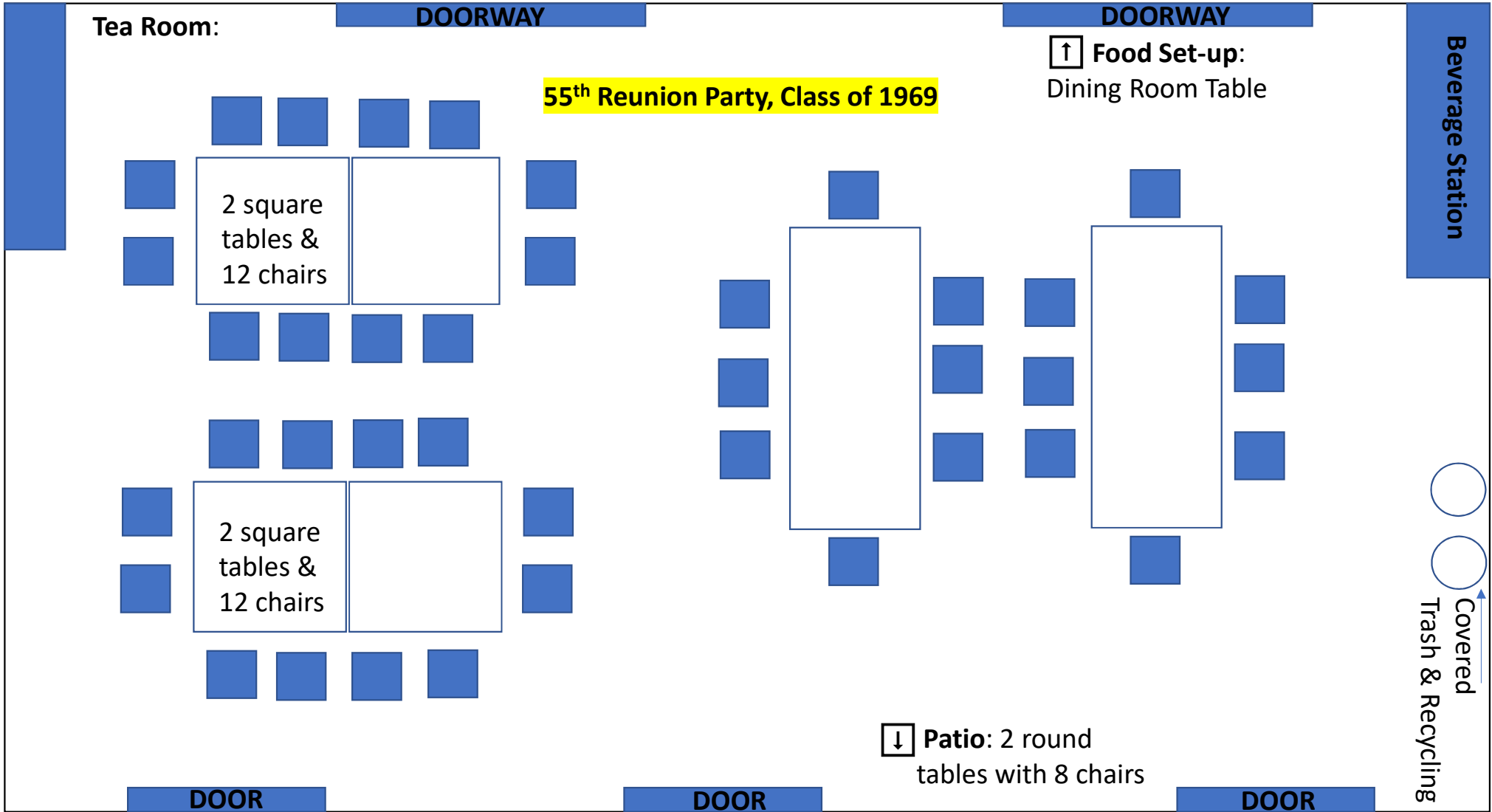
1990

1980

1995

# Alumnae Garden





# McCain Library: Room 211

- Dinner – varies
- Reception – varies



# McCain Library: Elmore Reading Room

- Dinner – varies
- Reception – varies

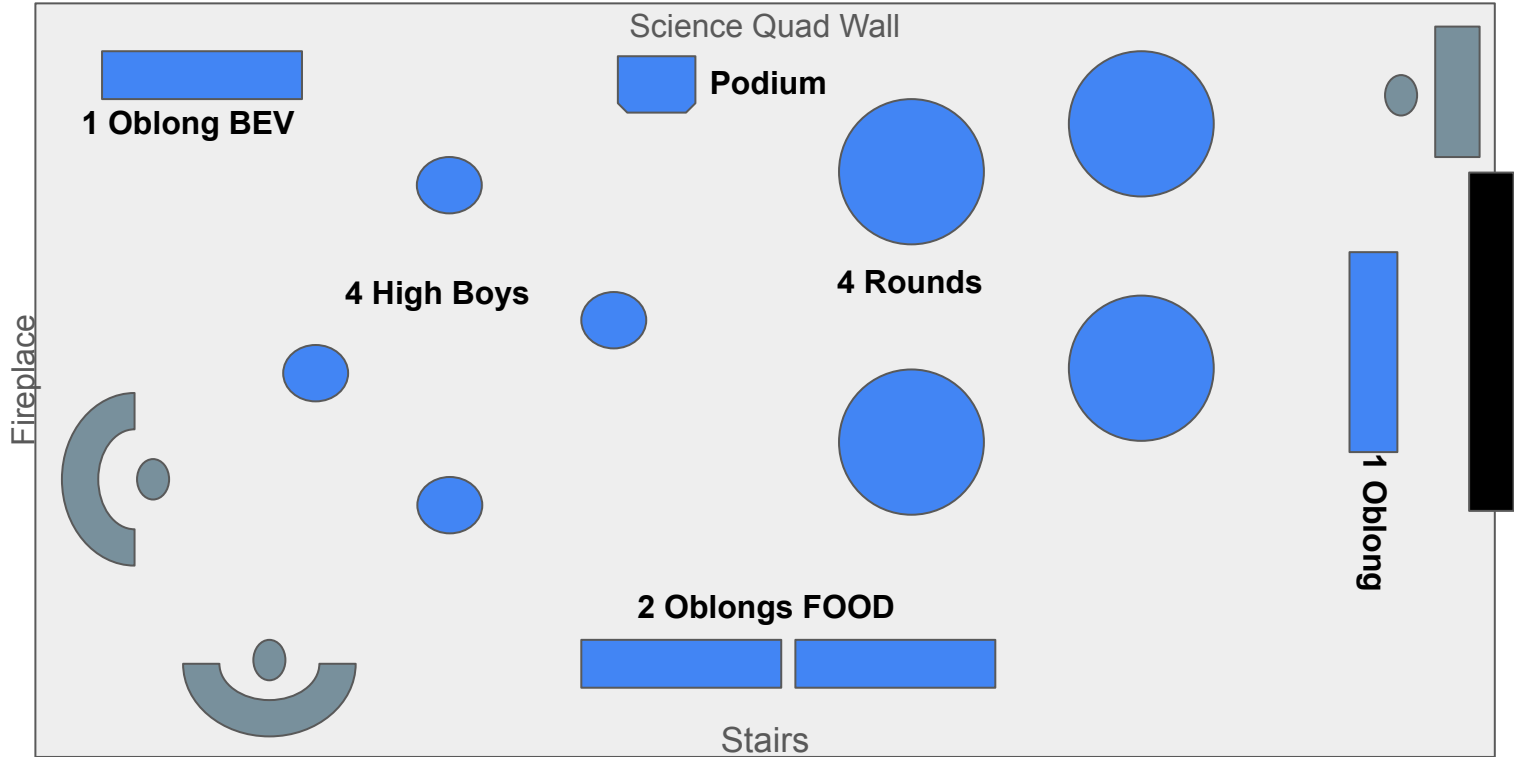


# McCain, Elmore Reading Room: 45th Reunion Party

Set up notes:

**Facilities: Set up by 3:00 p.m. (OR after Class Photos if we moved to Rain Plan)**

- **SEE DIAGRAM**
- Remove all soft seating chairs and ottomans except sofas and 3 small tables as pictured.
- (2) oblongs in front of stairs for FOOD
- (2) oblong in right corner near fireplace for BEVERAGES
- (1) oblong in back as pictured
- (4) rounds of 6
- (24) chairs
- (4) High Boys
- (2) trash cans



# Tier 2 Party Spaces:

McCain, Terrace (Rain plan: Main Floor)

Luchsinger Lounge & Patio

Campbell, Hayes Commons & Jones Atrium

Bradley Observatory & Patio w/Planetarium  
Show

## Tier 2 Classes:

1965

1985

1970

2010



# McCain Library: Reading Terrace

- Dinner – 64 Maximum
- Reception – 75 Maximum
- Rain Location: Inside library – area that surrounds the terrace.





# McCain Library: Reading Terrace

# Alston: Luchsinger Fireplace Lounge



- Reception – 40 Maximum
- There is a piano in the room that can be used by your class.
- The party can extend to the front patio of Alston, weather permitting.

# Alston: Luchsinger Fireplace Lounge



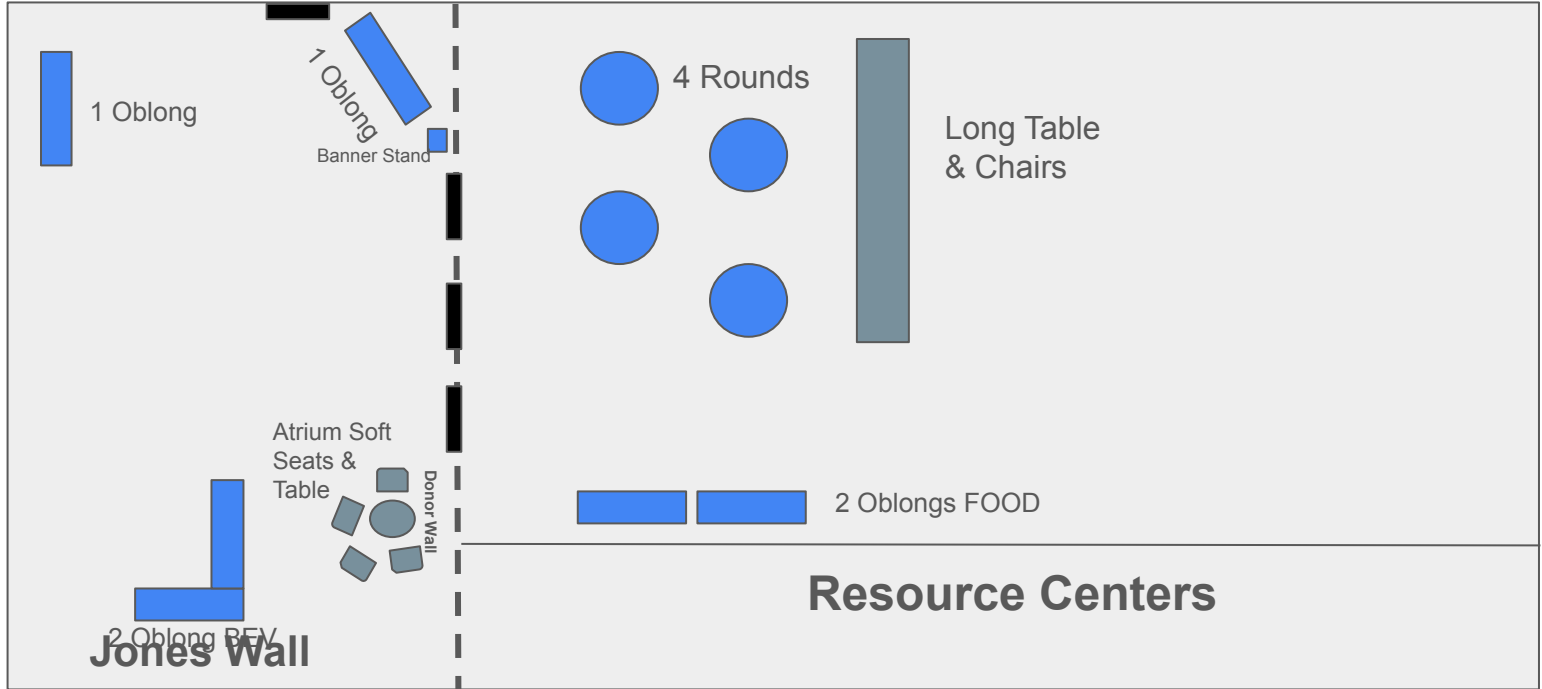
# Campbell Lobby & Jones Atrium



# Campbell Jones Atrium & Hayes Commons: 40th Reunion Party

Set up notes:  
**Facilities: set-up before 3 p.m.**

- **SEE DIAGRAM**
- Move Atrium round table and 4 chairs to in front of Donor Wall Banner stand in Atrium as pictured
- (4) oblongs in Atrium as pictured, 2 for BEVERAGES, L-shaped
- Remove first section of soft seating & tables in Hayes Commons as pictured
- Leave long table and chairs in center as pictured
- (4) rounds of 6 in Hayes Commons as pictured
- (24) Chairs
- (2) oblongs for FOOD in front of Resource Center as pictured
- The furniture on the right side of the long table can stay in place.
- (2) Trash cans (one in Atrium, one in Commons)





# Bradley Observatory

- Dinner – 48 Maximum
- Reception – 70 Maximum
- Party space includes patio, foyer, classroom and buffet in hallway.
- Planetarium show can be part of your party. Honorarium required for person hosting the show.

# Bradley Observatory





# Tier 3 Party Spaces:

Mary Brown Bullock, Atrium

Alston, Hub

Trellis Garden (Rain plan: Evans AB or  
ABC)

Dana, Dalton Gallery

**Tier 3 Classes:**

**2015**

**2005**

**2000**

**2020**

# Mary Brown Bullock Science Center

- Dinner – 80 Maximum  
(Up to 96 if the balcony area is used.)
- Reception – 100 Maximum



# Mary Brown Bullock Science Center



# Alston: The Hub & South Patio

- Dinner – 50 Maximum
- Reception – 75 Maximum
- Has a built in large screen TV perfect for showing a class slide show or the old Junior Production video.
- Can have your party just in the Hub, just on the Patio (rain location inside the Hub) or spillover and use both.



**Alston: The Hub & South Patio**

# Alston: The Hub & South Patio

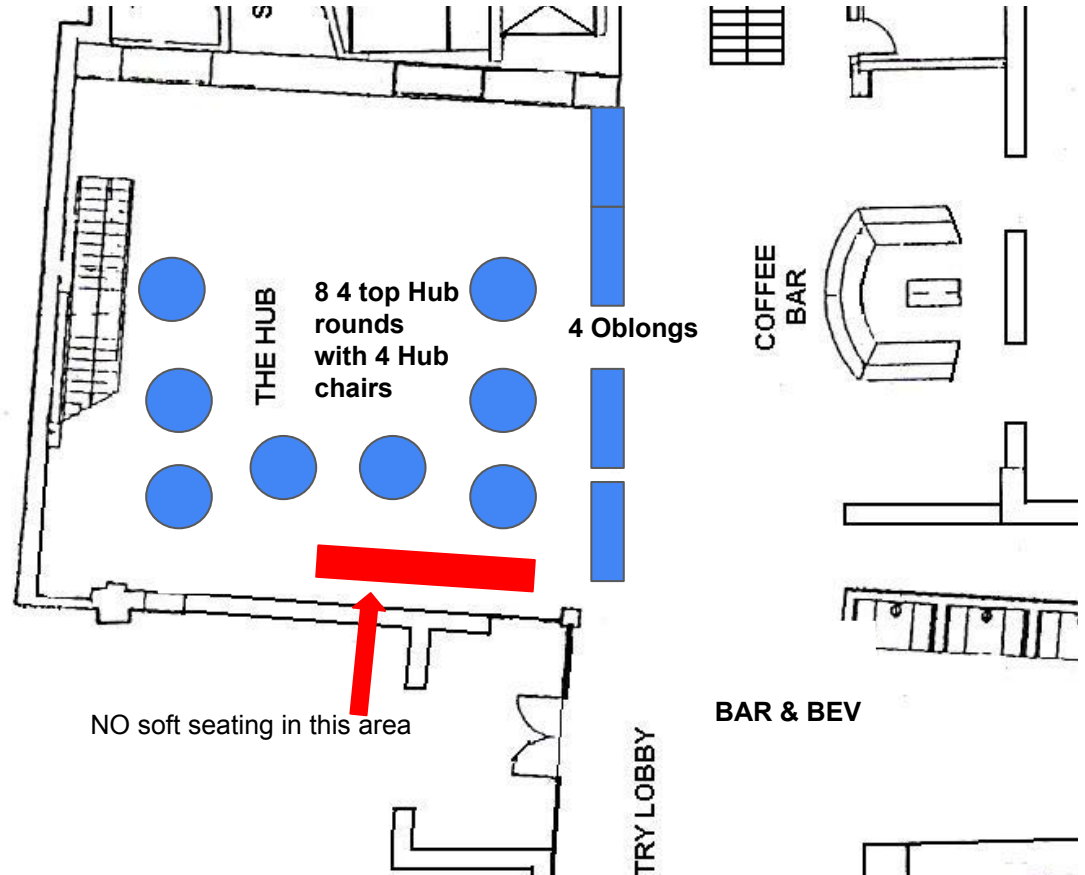


# Alston, Hub: 20th Reunion Party

Set up notes:

**Facilities: set up by 4:30 p.m. (QUICK FLIP after Scottie Marketplace)**

- **SEE DIAGRAM**
- Please clean all South Patio furniture.
- Move soft seating to the perimeter of The Hub.
- Add Blue light shades to Hub Lights
- (2) oblongs end-to-end between The Hub and Black cat for FOOD
- (2) oblong for BEVERAGES as pictured
- (8) small Hub rounds of 4—already in location as pictured
- (24) Hub chairs
- (1) trash can



# Alston: Trellis Garden

- Dinner – 50 Maximum
- Reception – 75 Maximum
- Rain Location Required – Evans Hall, Terrace Level, Rooms AB





# Alston: Trellis Garden



# Alston: Trellis Garden



# Alston: Trellis Garden



# Dana Fine Art: Dalton Gallery

- Dinner – 48 Maximum
- Reception – 75 Maximum
- Set-up plans cannot be finalized until the beginning of April, when the annual student art show is installed.





# Dana Fine Art: Dalton Gallery

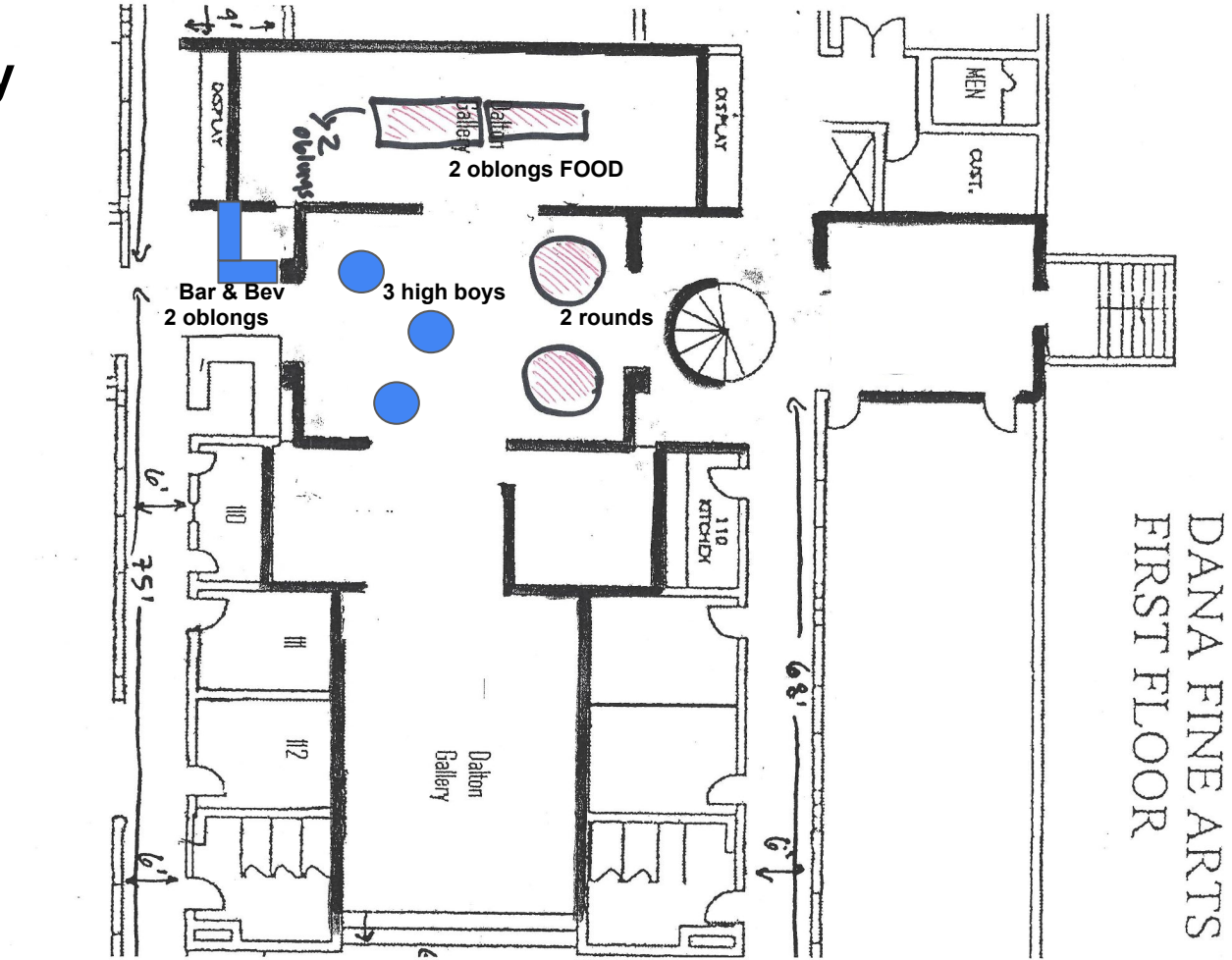


# 5th Reunion Party

SET UP notes:

**Facilities: set-up by 4:00 p.m.**

- **SEE DIAGRAM.** Similar to Scottie Shindig, but without 2 rounds in the back of the gallery and only 1 oblong in front for BEVERAGES..
- Move all benches to the farthest right gallery and put along both sides
- (2) oblongs for FOOD
- (2) oblong for BEVERAGES
- (2) rounds of 8
- (16) chairs
- (3) highboys spread out in main gallery
- (1) trash can



**50th  
Reunion  
Party  
Space**

# Rebekah Scott Hall: Woltz Reception Room

- Dinner – 144 Maximum
- Reception – 150 Maximum
- There is a piano in the room that can be used by your class.





# Rebekah Scott Hall: Woltz Reception Room

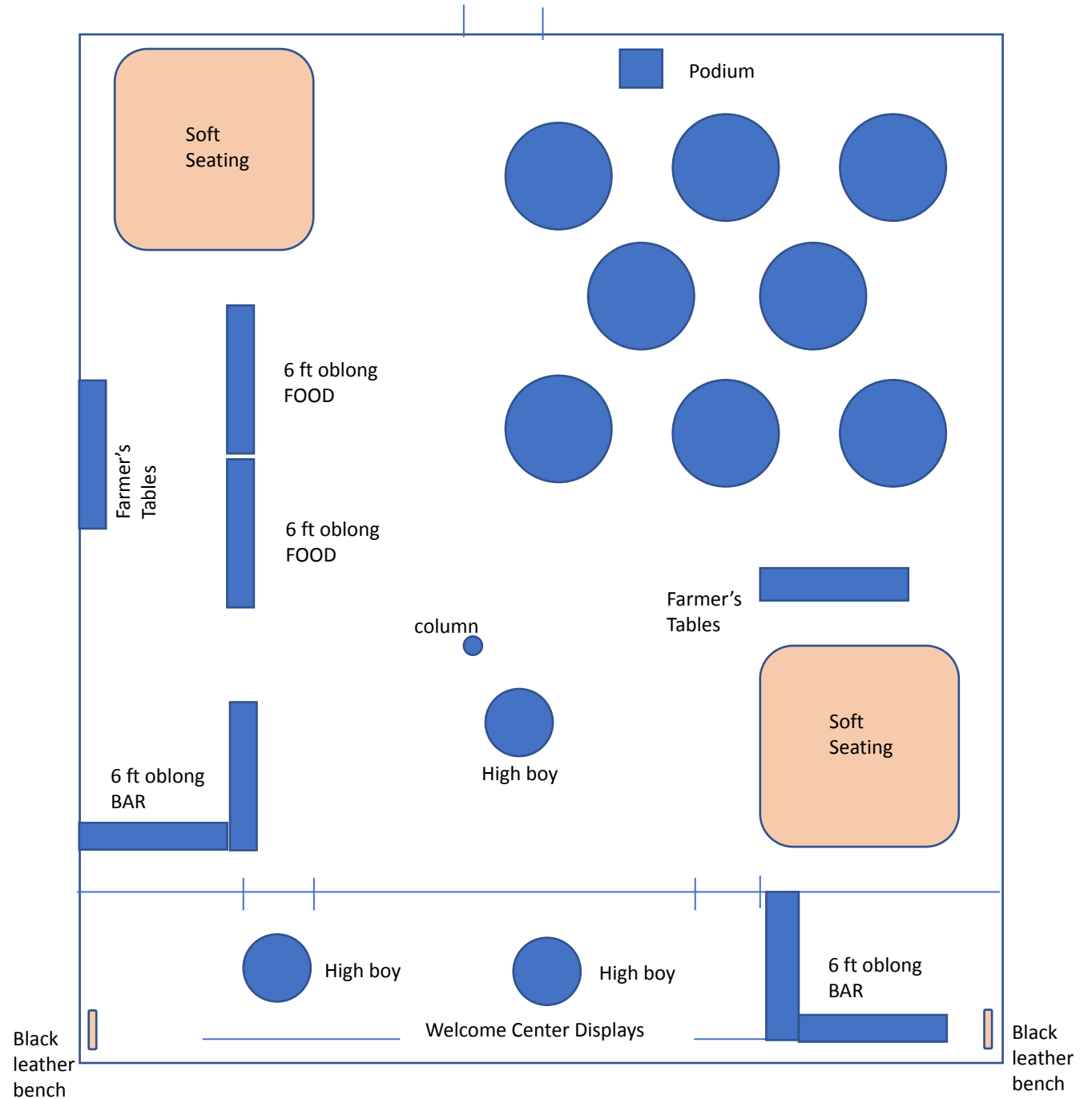


# Witkaze Tea & 50th Reunion Party

Set up notes:

**Facilities: Set up by 11 a.m. Will be the same for 50th Reunion Party**

- **SEE DIAGRAM**
- Rebekah podium placed as pictured
- (8) rounds of 8
- (56) SCOTTIE DOG chairs and others
- (2) oblongs for FOOD as pictured
- (2) oblong for BEVERAGES as pictured (one in Great Room, one in Welcome Center)
- (2) Farmer's Tables as pictured (already in space)
- (3) high boys as pictured
- (2) trash cans





Enjoy your time  
on campus!